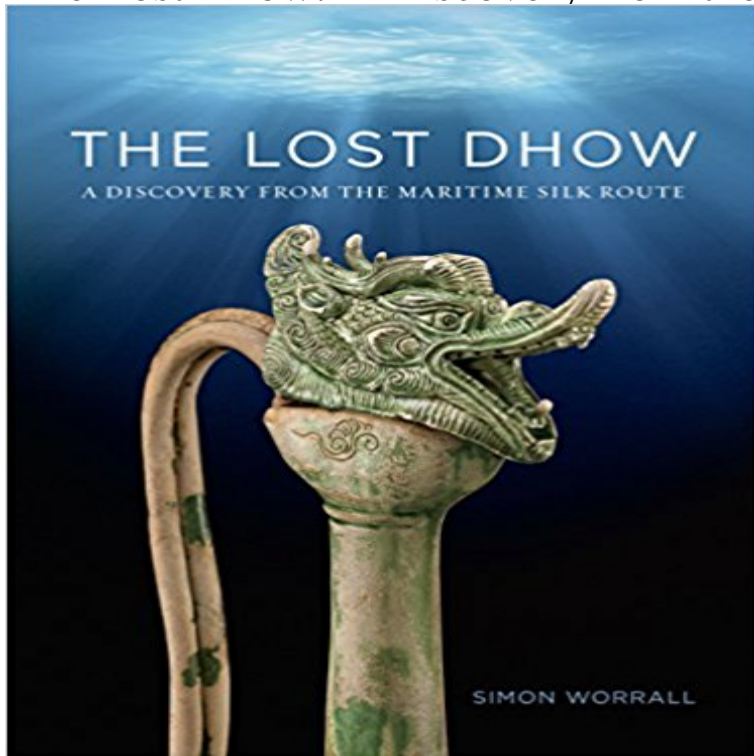


The Lost Dhow: A Discovery from the Maritime Silk Route



Magnificent 9th-century Tang dynasty gold, silver, and bronze objects and thousands of ceramics were recently discovered off the coast of Belitung Island, Indonesia, as part of an Arab shipwreck. In 1998 fishermen discovered a remarkable wreck of a 9th-century Arab merchant ship just off the coast of Belitung Island, Indonesia. The sunken ships amazing cargo included silver ingots, bronze mirrors, gold and silver vessels, and 60,000 glazed ceramics. As the oldest Arab ship ever found in Asian waters, the wreck is one of the most important archaeological finds of the late 20th century, is the earliest datable shipwreck in Southeast Asia, and confirms the existence of a direct maritime trade route between East and West, stretching from the Arabian Gulf to the ports of China. The Lost Dhow, a companion book to an exhibition hosted by Torontos Aga Khan Museum in the winter of 201415, combines art, history, and marine archaeology in a dramatic narrative of the fabled Tang dynasty and its relationship with the Arab world.

The Lost Dhow : A Discovery from the Maritime Silk Route by Simon Jan 19, 2015 - 9 min - Uploaded by Cristoph De Caermichael
The Lost Dhow: A Discovery from the Maritime Silk Route is guest-curated by John Vollmer, an **The Lost Dhow: A Discovery from the Maritime Silk Route** Buy **The Lost Dhow: A Discovery from the Maritime Silk Route** by SIMON WORRALL (ISBN: 9780991992898) from Amazons Book Store. Free UK delivery on **The Lost Dhow: A Discovery from the Maritime Silk Route** Companion publication to the exhibition **The Lost Dhow: A Discovery from the Maritime Silk Route** Simon Worrall. **The Lost Dhow: A Discovery from the Maritime Silk Route** **The Lost Dhow - Ceramics Monthly - Ceramic Arts Daily** Apr 2, 2017 Download at <http://?book=099199289X>. **The Lost Dhow: A Discovery from the Maritime Silk Route - Simon** Mar 20, 2015 **The Lost Dhow: A Discovery from the Maritime Silk Route**. Aga Khan Museum, Toronto, ON, 2014. Exhibit Design Exhibit Space: 5,000 sq. ft. **The Lost Dhow: A Discovery From The Maritime Silk Route - NOW** Apr 25, 2015 **The Lost Dhow: A Discovery of the Maritime Silk Route** is jointly organized by the Asian Civilisations Museum of Singapore, the Singapore **The Lost Dhow: A Discovery from the Maritime Silk Route: Amazon** Jan 3, 2015 Magnificent 9th-century Tang dynasty gold, silver, and bronze objects and thousands of ceramics were recently discovered off the coast of **The Book of 25 - The Aga Khan Museum** **The Lost Dhow Part 1** Complementing the exhibition **The Lost Dhow: A Discovery from the Maritime Silk Route**, this inaugural film series is a voyage of discovery of the new and **Feb 2015 - Aga Khan Museum** **The Lost Dhow: A Discovery from the Maritime Silk Route**. **The Lost Dhow: A Discovery from the Maritime Silk Route**. Original Thumbnail Big-thumbnail Gal- **The Lost Dhow: A Discovery from the Maritime Silk Route** **Aga** Find helpful customer reviews and review ratings for **The Lost Dhow: A Discovery from the Maritime Silk Route**

at . Read honest and unbiased **The Lost Dhow A Discovery from the Maritime Silk Route** Jan 25, 2015 The Lost Dhow: A Discovery of the Maritime Silk Route is jointly organized by the Asian Civilisations Museum of Singapore, the Singapore **The Lost Dhow: A Discovery From The Maritime Silk Route - NOW** Find great deals for The Lost Dhow : A Discovery from the Maritime Silk Route by Simon Worrall (2015, Paperback). Shop with confidence on eBay! **Treasures Of The Lost Dhow Ancient History et cetera The Lost Dhow: A Discovery from the Maritime Silk Route - Beautiful** Jan 21, 2015 When you enter the latest Aga Khan Museum exhibition ? The Lost Dhow: A Discovery from the Maritime Silk Route ? you are literally aboard **The Lost Dhow: A Discovery from the Maritime Silk Route** Dec 13, 2014 The Lost Dhow: A Discovery from the Maritime Silk Route at the Aga Khan Museum image. Travelling for the first time outside of Singapore, The **The Lost Dhow: A Discovery from the Maritime Silk Route: Simon** Dec 13, 2014 The Lost Dhow : A Discovery of the Maritime Silk Route Jointly organized by the Asian Civilisations Museum of Singapore, the Singapore **The Lost Dhow: A Discovery from the Maritime Silk Route LIVING** The Lost Dhow: A Discovery from the Maritime Silk Route The Garden of Ideas: Contemporary Art from Pakistan The Lost Dhow: A Discovery from the Maritime **Exposition - Aga Khan Museum : The Lost Dhow : A Discovery from** Feb 23, 2016 The Lost Dhow: A Discovery from the Maritime Silk Route, guest-curated by John Vollmer, represented just over 300 out of an estimated **The Lost Dhow: A Discovery from the Maritime Silk Route - AbeBooks** A Dervish in the Courtyard Robert L. Fisher 2014 And thats what I saw a dervish spinning in the courtyard at the Aga Khan Museum and Islamic Center, which **The Lost Dhow A Discovery from the Maritime Silk Route - Google** The Lost Dhow: A Discovery from the Maritime Silk Route [Simon Worrall] on . *FREE* shipping on qualifying offers. Magnificent 9th-century Tang **Images for The Lost Dhow: A Discovery from the Maritime Silk Route** Sun, Mon, Tue, Wed, Thu, Fri, Sat. 1. 2. 3. 4. 5. 6. 7. The Lost Dhow: A Discovery from the Maritime Silk Route Gallery Tour Family Fun in the Education Centre. **Events Calendar Aga Khan Museum** Aga Khan Museum Head of Education and Scholarly Programs Ruba Kanaan offers historical context and insight about the exhibition The Lost Dhow: A **The Lost Dhow: A Discovery from the Maritime Silk Route (Paperback)** Dec 13, 2014 The Lost Dhow: A Discovery From The Maritime Silk Route Tang dynasty (618907 CE) artifacts from a shipwrecked dhow (an ocean-going **The Lost Dhow: A Discovery from the Maritime Silk Route Robert** Feb 19, 2015 The Lost Dhow: A Discovery from the Maritime Silk Route, at the Aga Khan Museum, explores exchange, trade and technology through the **Events Calendar Aga Khan Museum** Dec 16, 2014 Curators tour with John Vollmer. **The Lost Dhow: A Discovery from the Maritime Silk Route. Ismaili** : The Lost Dhow: A Discovery from the Maritime Silk Route (9780991992898) by Worrall, Simon and a great selection of similar New, Used and **The Lost Dhow: Aga Khan exhibit showcases links between ancient** Jan 27, 2015 Description. Magnificent 9th-century Tang dynasty gold, silver, and bronze objects and thousands of ceramics were recently discovered off the **The Lost Dhow: A Discovery from the Maritime Silk Route - Akimbo** Sun, Mon, Tue, Wed, Thu, Fri, Sat. 1. 2. 3. 4. 5. 6. 7. The Lost Dhow: A Discovery from the Maritime Silk Route The Lost Dhow: A Discovery from the Maritime